

Myers–Briggs Personality Type Indicator as a Lens to Analyze Literature (Work-in-Progress)

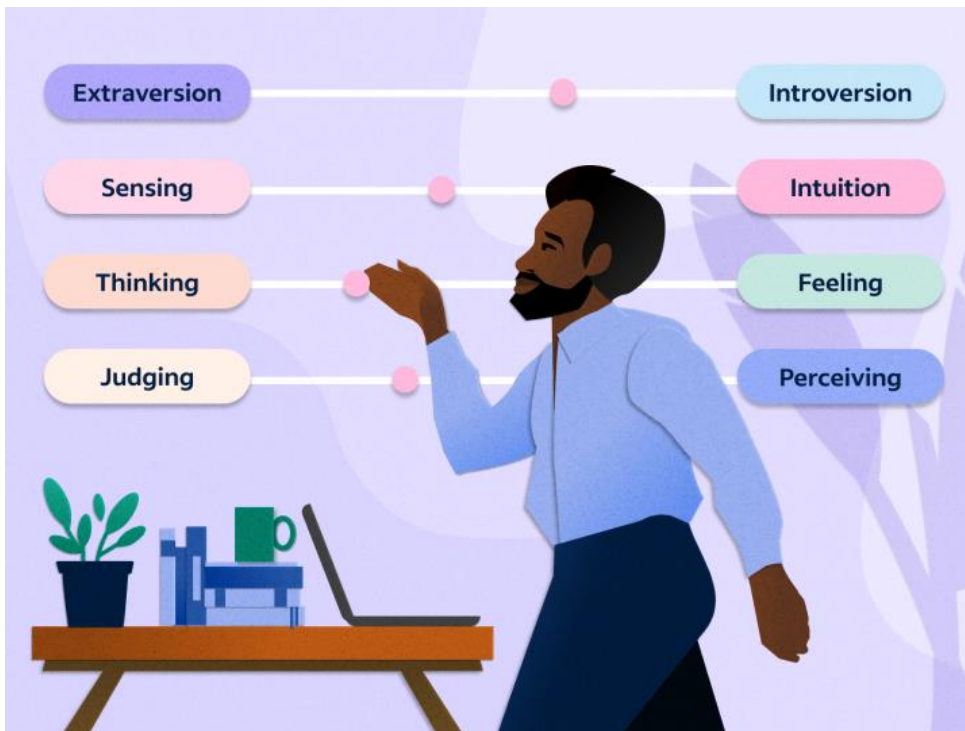
Yoko Munezane

Context: Academic Writing

Background: There are theoretical frameworks for literary analysis such as cultural analysis, feminist analysis, and psychoanalytic analysis, using Freudian theory as a framework to deconstruct a text. It seems there is a scarcity of research using Personality Type as a lens for literary criticism.

Procedures:

1. Become familiar with Myers-Briggs personality type Indicator.
2. Students take the personality indicator test and raise awareness of their characteristics, uniqueness, strengths, and weaknesses.
3. Read and explore the characteristics of 16 different personality types carefully.
<https://www.myersbriggs.org/my-mbti-personality-type/mbti-basics/the-16-mbti-types.htm>
4. Have discussions with peers regarding personality type and career, learning, human relationships, parenting, and personal growth among others.
5. Apply the personality type indicator as a lens to analyze literature in depth. For example, identify the personality type of characters and discuss how extraversion/introversion, sensing/intuition, thinking/feeling, and judging/perceiving, personalities are expressed in what they say, how they feel and behave, how they interact with others, and how they learn and grow.



<https://www.indeed.com/career-advice/finding-a-job/jobs-for-myers-briggs-personality-type>